



Department
for Transport



Investing in the South West

Foreword

Rt Hon Chris Grayling MP
Secretary of State for Transport

No region can thrive without decent transport links. People across the South West rely on such links for work, education, leisure and access to essential services. Last year over 23 million people visited the South West, confirming its place as one of our greatest natural assets. But we know this is also a region with challenges. As a largely rural region with a unique geography, the consequences of poor transport can often be economic and social isolation, both for the region and its people.



We know that this region prizes its links to the rest of the UK highly and feels the effect keenly whenever they are disrupted. I also understand some people feel isolated from the rest of the country – and from the decisions taken in London that affect people's lives. Better transport won't just help people get around, it'll help people get on in life by giving them access to jobs and schools. This in turn will support the creation of a stronger and more productive economy.

So we are continuing to deliver on 'devolution deals', such as in the West of England and in Cornwall, which will provide powers to make investments based on local knowledge and needs. And we are supporting the development of Sub-National Transport Bodies and other partnerships, such as the Peninsula Rail Task Force, to act as powerful voices for the regions, helping to develop and secure the strategic transport interventions that they need for long term economic prosperity.

The government is already transforming connectivity through the South West by creating a continuous dual carriageway along the A30 through to Camborne and, in the longer term, we aim to extend this to Penzance. Together with our commitment to upgrade the A303 and A358 to provide a high quality dual carriageway from Taunton to the M3, and planning for the upgrade of the A417 'Missing Link' between the two dual carriageway sections at Brockworth and Cowley, the region is benefitting from billions of pounds of government investment in the national road network.

New high speed trains are finally replacing the old Intercity 125s in the biggest upgrade to the South West's rail services in a generation. The new trains will offer more seats, quicker journeys and better reliability.

Our investment in the region's railways will continue. We want to bring regular train services back to Okehampton in Devon and we recognise local aspirations for an Okehampton to Plymouth rail link. We also share local ambitions for a state-of-the-art suburban rail service in the Bristol area – including the reopening of the Portishead line. We are also looking at what would need to be done to deliver greater capacity for diversions between Castle Cary and Exeter and allow early delivery of more frequent train services between Axminster and Exeter.

We know that the resilience of the Great Western Main Line – particularly at Dawlish – is

crucial to the region. Since the storms of 2014 the government and its partners have been working firstly to repair and now secure the resilience of the line. The government will now invest up to £80 million in a new sea wall that will provide greater protection to the railway at Dawlish – keeping vital services running and giving passengers the reliable services they deserve.

The government is supporting the great cities in the region to improve their transport. The city regions of Bristol, Plymouth and South East Dorset are set to receive funding to develop transport and promote local growth through the £2.5 billion Transforming Cities Fund.

Towns and cities across the South West have recognised the benefits of cycling and walking to improve health and wellbeing, congestion and air quality. The Department is currently working with six

local authorities in the South West to develop local cycling and walking networks. This includes Bristol who are one of eight Cycle Ambition Cities across England at the forefront of work to help create safe, liveable and active cities who are sharing a total of £210 million in government funding.

The government is committed to making our roads safer and we have allocated £100 million to help tackle the 50 most dangerous A roads in England, including essential safety improvements on roads in Cornwall, Devon, Gloucestershire and North Somerset.

It is essential that the regions and nations of the UK have good links to the capital. Following Parliament's support in 2018 for a third runway at Heathrow, the future is bright for regional airports such as Bournemouth, Bristol, Exeter and Newquay. We expect around

15% of the new runway capacity to be used for domestic flights, and the South West stands to benefit from the improved air, rail and road links to an expanded Heathrow, opening up links to all the fast growing, long haul markets around the world that Heathrow can provide.

Our investment will help the South West create jobs and compete for decades to come in a rapidly changing global economy – and demonstrates the continued delivery of the six point long term economic plan for the region as outlined by the Chancellor in 2015.

We are investing in the South West. Investing to build a stronger, more productive economy, investing to connect people to work and education, investing to make travelling easier and more reliable, investing to create greener infrastructure and investing to give the region infrastructure fit for the future.



Investing to build a stronger, more productive economy

The South West's connectivity to the rest of the UK and beyond is vital to its long-term economic future.



£360m

for a fleet of brand new Intercity Express Trains to the region

That is why the government is making major strategic investments which will help strengthen and grow the region's economy. Improvements that will make it easier for businesses in the region to do business with the rest of the country, make it more attractive for businesses from outside to invest and allow new businesses to set up, grow and flourish. As one of the UK's top tourism assets, these investments will also provide better access to and travel

within the region for visitors from the rest of the UK and overseas.

On the railways, we are working with train operators to bring brand new Intercity Express Trains to the region – the £360 million fleet of new trains are taking over from the existing trains on the Great Western route and will offer up to 24% more seats and, when the new timetable is introduced, reduced journey times. This builds on the



A new motorway junction on the

M49

to facilitate economic growth – which will be fully completed by the end of 2019.

already impressive reductions in journey times and earlier arrivals in the South West from London achieved over the past few years, reducing from close on 4 hours and an 11:17 arrival in Plymouth as the first train from London in January 2014, to just under 3 hours and an 09:34 arrival in January 2019. The Intercity Express Trains are also running in electric mode from London to Bristol Parkway and London to Newbury, giving passengers a quieter and more comfortable journey.

Better Roads



New high quality dual carriageway connections

from Taunton to the M3



Removal of Severn bridge tolls



Dualing the A30

between Temple and Higher Carblake and between Chiverton and Carland Cross



The protection of the rail line at Dawlish is a national priority of utmost importance. £70 million has been invested to repair and strengthen this vital rail artery, and improve resilience at other points across the Western rail route, since the damage caused by the storms of 2012 and 2014. To help find the right permanent solution the government provided an additional £15 million for world-leading engineers in coastal, tunnel, cliff and railway engineering to carry out detailed ground investigation in three key areas around Dawlish and Teignmouth. Following the conclusion of this investigation work, the government has now announced it will invest up to £80 million in a new sea wall that will provide greater protection to the railway at Dawlish and the homes behind it – giving passengers the reliable services they deserve.

The government has also invested significantly in doubling the railway track from two to four lines at Filton Bank (between Bristol Temple Meads and Bristol Parkway), enhancing the signalling and adding an additional platform at Filton Abbey Wood Station, as well as extending three other platforms. Passengers will see more frequent train journeys including doubling the number of fast services between Bristol Temple Meads and London from two to four per hour. The extra capacity will mean train services are more resilient to disruption and planned maintenance on the network.

In addition, the enhancement of Bristol East Junction within the next investment period (2019–24) is a significant scheme that will facilitate improved suburban rail services across the Bristol region.

As we continue to build and develop a railway fit for the twenty-first century, passengers are also set to benefit from improvements to mobile connectivity which will help them to keep up with work and connect with friends.



Continuing our programme of work to deliver the **future resilience** of Dawlish and the Western rail route



Stonehenge



As part of our £29 billion improvement package on England's most important roads, the government is investing in new high quality dual carriageway connections in the South West, connecting Camborne to the M5 at Exeter, and the M5 at Taunton to the M3 at Basingstoke. This is part of a longer-term aim to extend dualling to Penzance and includes a £1.6 billion investment in a 1.8-mile tunnel to bypass Stonehenge. Significant investment on the M4 and M5 corridors will also deliver more reliable and quicker journeys to the whole of the region.



£1.6bn

to upgrade the A303 at Stonehenge



The A417 provides an essential link to the M5 at Gloucester and the M4 at Swindon – two of the region's top growth areas. It helps businesses in the South West connect with markets and opportunities in the midlands and the north, and attracts investment for Gloucestershire and its neighbours by linking them to London and the south east. The government recognises that the three mile stretch of single carriageway on the A417 between the Brockworth bypass and Cowley roundabout, known as the missing link, requires improvement. Highways England are currently considering a preferred route and our intention is to begin construction in the second Road Investment Strategy period (2020 to 2025).



International and domestic air links are also vital to the region's future. The government has backed expansion of Heathrow and we expect around 15% of the new runway capacity to be used for domestic flights. Airports such as Bournemouth, Bristol, Exeter and Newquay stand to benefit from the improved air, rail and road links to an expanded Heathrow, opening up links to all the fast growing, long haul markets around the world that Heathrow can provide. Ahead of that, the government's commitment to Newquay airport means that there will be a new direct air route between Newquay and Heathrow Airport from April 2019. The public service obligation which allows this route to run is jointly funded by a government and Cornwall Council initiative and will give passengers a choice of more than 200 destinations across 85 countries via Heathrow.

"This sends a strong message that Cornwall is open for business. Having 4 direct flights a day to Europe's busiest airport provides us with fantastic links and more regular access not just to London, but also to the rest of the world. The new agreement will help businesses plan ahead as well as creating more opportunities to do business across the globe. This service will provide connections directly to 160 of the globe's most economically important cities, unlocking opportunities for tourism and trade. This will further enable Cornwall to do business with the rest of the world – and the rest of the world to do business with Cornwall."

Adam Paynter
Leader of Cornwall Council

Better Railways

New Intercity Express Trains



24% more seats



Journey time savings



Better environmental credentials



More frequent services – doubling the number of trains each hour between London and Bristol Temple Meads and London and Gloucester / Cheltenham

Wider Rail Investment

→ Ongoing investment to develop and implement resilience improvements at Dawlish and on the Western rail route

→ Doubling the railway track from two to four at Filton Bank

→ Half hourly (up from hourly) services between Plymouth and Penzance

→ Opening up rail connections to Portishead and North Bristol

→ New stations at Newcourt and Portway Parkway



Investing to connect people to places

Good transport matters to people's everyday lives. Getting to work, getting to school and getting to training opportunities all depend on decent transport links being in place to provide quick, reliable journeys.

In a largely rural region like the South West good transport matters more than ever, which is why across the region we are making targeted investments. Our interventions will help give people better access to jobs, skills and education, opening up new opportunities.

In North Devon, £83 million is being provided towards the cost of widening several sections of the A361 North Devon Link Road between

South Molton and Barnstaple, together with a number of junction improvements to improve the connections between North Devon and the M5. This will create better and more reliable journeys on the corridor. We also want to bring back regular Exeter to Okehampton train services to further boost connectivity in the area and we recognise local aspirations for an Okehampton to Plymouth rail link.

“The North Devon Link Road is a vital route for the region, and the announcement [of funding] confirms that the government has recognised the issues of getting in and out of North Devon. The improvements to this main route will give a huge boost to our economy, the benefits will be felt by our local residents, businesses and visitors.”

Councillor Andrea Davis
Devon County Council Cabinet Member
for Infrastructure, Development and Waste



To maintain vital sea links, the government has provided over

£6m

to improve the quays at St Mary's (Isles of Scilly) and dredge Penzance Harbour

In the St Austell area of Cornwall, better access to the A30 is being provided by £78 million of government funding towards the cost of the St Austell Link Road, which will improve connectivity and competitiveness, address congestion and support regeneration and the delivery of housing. The scheme will complete the link between

St Austell and the A30, Newquay Airport and the Aerohub Enterprise Zone as well as improving access to existing and new housing and employment sites in mid-Cornwall. It will also support regeneration in Roche, Bugle and the Clay Country area, by addressing traffic issues and improving opportunities for business.

“The St Austell Link Road is another critical piece in the infrastructure jigsaw that will hugely improve connectivity in mid-Cornwall. It will increase access to existing and new employment sites like the Carluddon Technology Park and key destinations including the Aerohub Enterprise Zone and Cornwall Airport Newquay.”

Mark Dorrige
Chairman of the Cornwall and Isles of Scilly Local Enterprise Partnership



The government is providing £23 million towards the Forder Valley Link Road in Plymouth. It will provide a direct, alternative route to the Derriford area from the A38, improve connectivity to major employment and housing areas in Derriford and provide a direct link to the east for future park and ride services. The scheme, which also includes a bus lane and a segregated footway, is due to be completed in 2022.



£1.7m

through the New Stations Fund for a new station (Portway Parkway) which will serve the existing park and ride site on the A4 Portway, near the M5 and M49 motorways



£22m

of Growth Deal funding towards the major rebuild of the A338 within the Bournemouth International Growth Programme. The scheme has ensured the future viability of the road and has delivered more reliable journey times and improved road safety



With a government contribution of £76 million, the South Devon Highway between Newton Abbot and Torbay has improved the quality of life for local people and is boosting prosperity for businesses across the county. Opening in December 2015, it provides an alternative to driving through the middle of Kingskerswell village. The road is critical to growth in the Newton Abbot and Torbay areas and is opening up Torbay for tourism, creating jobs and providing a more pleasant drive for locals and visitors alike.

The government is investing over £35 million through the Growth Deal settlement to enhance transport connectivity across Somerset. This includes a range of road improvements on the Yeovil Western Corridor, Taunton Toneway Corridor and to Junction 25 on the M5, as well as road access for the Enterprise Zone at Huntspill.

Increased east-west road capacity has been provided in Taunton through government funding of £15 million to construct a Northern Inner Distributor Road (Trenchard Way). The road, which was formally opened in June 2018, provides relief for congested routes and access to areas of brownfield land for development, including housing.



Removal of Severn bridge tolls will help transform the economy in South Wales and the South West, putting over

£1,000

a year back in the pockets of hard-working families



Government has also provided over £9 million towards capacity improvements to the A40 Elmbridge Court Roundabout on the edge of Gloucester, including the construction of a new “straight on” lane (a “hamburger” arrangement). Building on the award-winning work at the C&G and Walls roundabout in 2014, the project has delivered much needed journey time improvements on the critical A40 arterial road that connects Gloucestershire from east to west and benefits those accessing the A417, M5, M50 and beyond.

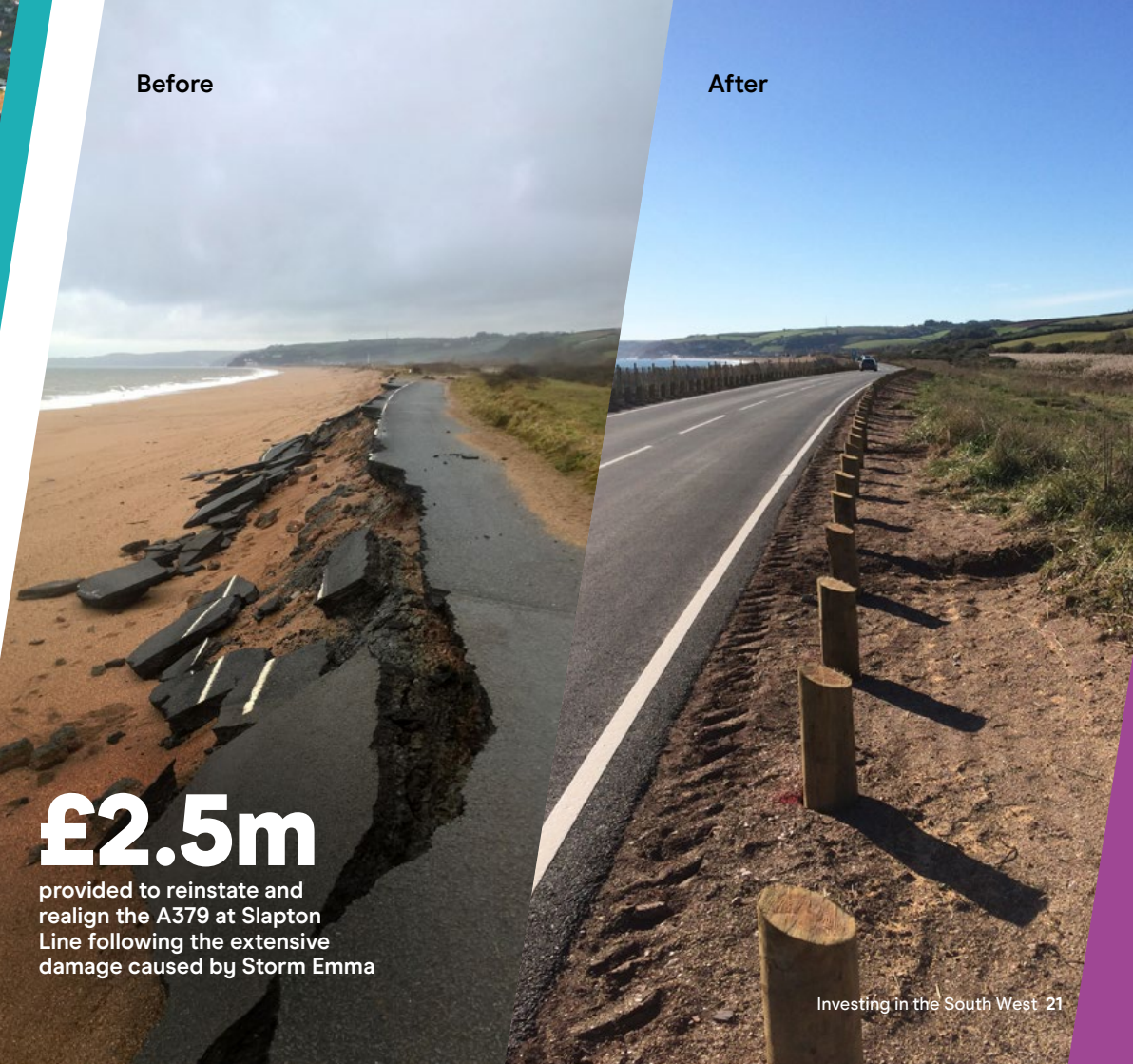
The government’s decision to remove tolls means drivers can now travel for free across both the Prince of Wales and original Severn Crossing for the first time since 1966. This will help transform the economy in South Wales and the South West, putting over £1,000 a year back in the pockets of hard-working families. It will also cut costs for businesses, giving them a huge boost to help create new opportunities and new potential for growth.

“The new Elmbridge Court Roundabout is one of the most used roundabouts in the county. These improvements have so far been great for productivity and reduced travel time for up to 10 minutes per journey in peak commuter time. This has not only meant that people can get to Gloucester and back much more quickly, but they’re also using less fuel and there is less carbon going into the air. Thanks to this scheme, Gloucestershire is moving better.”

Richard Graham
MP for Gloucester



Before



After

£2.5m

provided to reinstate and realign the A379 at Slapton Line following the extensive damage caused by Storm Emma



MetroWest

Metrowest is an exciting proposal which will open up rail connections to Portishead and North Bristol. It is estimated it could generate 1.7 million new passenger trips and give 80,000 more people access to train services. The government is already providing a £57 million contribution to Metrowest and is considering the case for further funding.

“I want the West of England to have the rail network it deserves to help reduce congestion, improve air quality and keep people moving. This is a really positive step in the right direction to deliver a transport network fit for the future. I hope including light rail as an option for Portishead will reduce the cost of re-opening the line and also open up other opportunities within the region.”

Tim Bowles
Mayor of the West of England



Growth Deal money is being used to deliver a multi-million station upgrade of Taunton station. It will improve access arrangements, create a new multi-storey car park and bus/rail interchange facilities, create a new main entrance on the south side of the station, improve the public realm around the station entrance and improve pedestrian and cycle facilities. It will also release new commercial, residential and retail development opportunities, support the delivery of the adjacent Firepool town centre regeneration site and result in improved connectivity to the town centre. The scheme provides the capacity needed to meet a growing demand for rail travel which will in turn support economic growth. Redevelopment of the station will also enable up to 250 new permanent new jobs on adjacent land unlocked by the scheme. Construction is due to start in summer 2019 and be completed by early 2020.

“The enhancements to our transport infrastructure, including those at Taunton railway station, will improve connectivity for the whole area. This [Growth] Deal will make a huge difference to our plans to boost the economy.”

Councillor David Hall
Cabinet Member for Economic Development, Planning and Community Infrastructure – Somerset County Council, and Heart of the South West LEP Board Member



The nine month long £22 million major rebuild of the A338 was the first completed scheme within the Bournemouth International Growth Programme. The scheme ensures the future viability of the road and has delivered more reliable journey times and improved road safety.

The government is investing in a package of rail improvements in Cornwall, designed to make people's journeys quicker, more reliable and more comfortable. Investment has gone into a new maintenance facility at Penzance Long Rock Depot, the modernisation of the Cornish Sleeper trains and resignalling of the main line from Plymouth to Penzance which will allow trains to run every half an hour from May 2019, up from around hourly at present.



Rail passengers gained a new station at Newcourt in Devon thanks to funding of

£741k

from the New Stations Fund. The station opened in 2015 and includes a single 124m long platform, waiting shelter, CCTV security systems and secure cycle parking



Investing to make journeys easier and more reliable

We recognise that travelling is not often something people do for the sake of it, but because they have a need to get around. People want transport that works for them, but too often transport represents a barrier rather than an opportunity.

We are making investments in the South West which are designed to open up transport, give more choice, take the hassle out of making a trip and give people greater confidence and certainty about their journey.

Accessible stations make it easier for people to visit friends, get to the shops or to work. Accessibility benefits everyone – people with health conditions or impairments, people with children, heavy luggage or shopping and some

older people. It's also good for the economy and means fewer car journeys, less congestion and carbon emissions. The government has provided £13m through the Access for All programme to improve access at rail stations through the South West, including at Chippenham, Exeter Central, Keynsham, St Austell, Taunton, Swindon and Westbury – with further improvements to be delivered at Cheltenham,



£5m

through the National Productivity Investment Fund for capacity and safety improvements to the A350 near Melksham and Mead Way in Swindon

Torquay, Totnes and Weston-super-Mare.

The Growth Deal funding settlement of over £78 million for Cornwall has helped to fund improvements to make travelling both more comfortable and productive. It includes improvements to Penzance, St Erth and Truro stations and funded Wi-Fi in virtually all Cornish stations. It is also funding lounges / showers for sleeper

passengers at Penzance, Truro and Paddington. St Erth is also being upgraded to a new transport interchange including park and ride parking for St Ives. Growth Deal money is also being used to fund a package of improvements to the bus network, including new cleaner vehicles, bus stop improvements and integrated ticketing to facilitate the access



£11m

contribution for the Bath Transportation Package to expand park and ride sites, implement showcase bus routes and make improvements to the city centre environment. The scheme has reduced congested and improved the environment and accessibility in central Bath

to employment, skills and services required by a growing economy. New buses are now in service and further timetable improvements are expected as a result of the £8 million government investment.



£3m

through the National Productivity Investment Fund towards the Weston-super-Mare Town Centre Transport Enhancement Scheme, including the provision of a bus interchange and improved pedestrian / cycle infrastructure



£17.5m

of improvements will be delivered in Devon through the National Productivity Investment Fund. This includes the Exeter Eastern Growth and Sherford Main Street schemes in Devon, and the Forder Valley Interchange and Morlaix Drive Access Improvement and Bus Priority schemes in Plymouth



£103m

through the £2.5 billion Transforming Cities Fund to transform connectivity within the West of England city region



The West of England Combined Authority will receive £103 million through the £2.5 billion Transforming Cities Fund to transform connectivity within the city region. In particular it will help facilitate new and more frequent suburban rail services, extend bus service improvements and deliver integrated ticketing for public transport services throughout the area. This will build on the £113 million provided by government towards the MetroBus scheme which has provided a 50 kilometre bus rapid transit network, linking key economic and employment centres, as well as regeneration and development areas, in the greater Bristol area. It includes the South Bristol Link which provides an express bus route and roadway between Long Ashton and Hengrove Park, as well as helping Bristol Airport provide easy, reliable and efficient access to the airport for passengers and staff.

“The Gloucester Transport Hub £6.4 million Local Growth Fund Project is not only a huge infrastructure investment it is also a positive endorsement of sustainable transport. The Transport Hub will act as a catalyst for development and regeneration for the wider Kings Quarter development and will lead to tens of millions of further investment into Gloucester City centre.”

David Owen
Chief Executive of GFirst LEP



£269m

annually for local highway and other local transport maintenance and improvements across the South West (up from £230 million in 2010/2011), including £9 million through the Pothole Action Fund



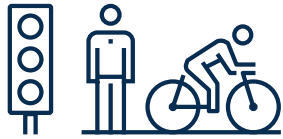
£9.3m

towards Phase 1 of the Weston Package, which delivered a new bus only link road and bus priority measures to and around Worle railway station, along with a new 320 space car park

Plymouth and South East Dorset city regions are set for a share of the £2.5 billion Transforming Cities Fund. The Department is working with Plymouth to develop a package of proposals to transform connectivity within the city.

Details are being developed but the Fund is likely to support the further upgrade of Plymouth station, complementing work that is already underway to provide a quality gateway to the city that is fit for modern day use. The Fund is also likely to be used to enhance capacity through the provision of park and ride sites and bus / cycle priority measures, and to address pinch points on the A38, A386 and A379 corridors.

Through investment into innovative solutions, the objective is to drive behaviour change towards the use of public transport and active travel modes, supporting the increase of bus patronage by 50% and doubling footfall at Plymouth station, as well as supporting the delivery of over 26,700 homes and up to 20,000 new jobs across the area covered by the Plymouth and South West Devon Joint Local Plan.



£2m

through the National Productivity Investment Fund for the Wallisdown Crossroads scheme in Bournemouth to deliver junction improvements and new provision for cyclists and pedestrians on the A3049

“Plymouth is on the up. We’re growing, creating businesses and opportunities – it’s great to know that our ambition is being recognised and improving Plymouth’s connectivity by rail and by road is critically important to unlocking our economic potential and increasing productivity. Furthermore, we are excited at the headroom this fund gives us to develop and deliver innovation in the way people travel in Plymouth. People need to be sure that public transport gets them to where they need to be at the time they need to be there. It’s also good to see that the Department for Transport recognises that sustainable transport needs to be part of our growth success story.”

Tudor Evans OBE
Leader, Plymouth City Council



£6m

Growth Deal funding towards the creation of a high quality pedestrian and cycle route in Bodmin which will help to accelerate growth in the local economy





£28m

through the Local Pinch Point Fund to remove bottlenecks on the local highway network across the South West which were impeding growth by restricting the movement of goods and people



£76m

through the Highways Maintenance Challenge Fund to allow local authorities in the South West to bring forward maintenance schemes which will make a real difference to road users



In South East Dorset the Transforming Cities Fund will help to alleviate traffic congestion through modal shift, in doing so increasing productivity. Details are being developed but it is likely to deliver direct bus connectivity and priority to outlying areas and strategic cycle routes to existing and proposed employment, education and housing sites, as well as utilise latest technologies to help manage the transport network effectively. This will help support the delivery of 20,000 new jobs and around 30,000 new homes by 2026. The delivery of a modern transport system will support the consolidation of the existing nine Dorset Councils into two new Unitary Authorities, with the new Bournemouth, Christchurch and Poole Unitary Authority being at the heart of the city region.

“I am extremely pleased that South East Dorset has been shortlisted by the Department for Transport to share in the £2.5bn Transforming Cities Fund. This significant funding will enable us to make a fundamental change to our local transport system in the years ahead, helping to tackle the long-standing congestion issues. Our work over the past two years with major partners from industry and the local universities, together with really solid support from all our MPs enables us to be at the forefront of implementing the latest technology, ensuring that our transport network will operate effectively. The modern transport system we hope to develop will reflect the ambitions of the new Bournemouth, Christchurch and Poole Council, ensuring that we can create and accommodate new jobs and bring forward housing in a sustainable manner.”

Cllr John Beesley
Bournemouth Council Leader

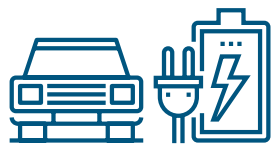


£2.8m

to resurface roads in and around Hinkley and for improvements to Bridgwater Station to aid the delivery of transformational benefits in Somerset as a result of Hinkley Point

Investing to create greener infrastructure

The world of travel is changing, this will bring huge opportunities as well as challenges for the South West. We are investing to help the region capitalise on the opportunities and meet these challenges.



£1.5bn

investment in ultra-low emission vehicles by 2021

New, cleaner transport such as low-emission vehicles could bring huge environmental gains, helping to secure the region's long-term future as a prime tourism destination. But investment is needed, for example in new charging points for electric vehicles, to help smooth the transition to these technologies.

The number of electric vehicles bought in the UK was up nearly 30% in 2017, and having committed to ending the sale of new conventional petrol and diesel cars and vans by 2040, government is also making sure we have the right infrastructure in place to support drivers.



100k

new home chargepoints delivered nationally

Nationally, the Government is investing nearly £1.5 billion between April 2015 and March 2021 to support the transition to zero emission vehicles. The government wants the UK to be the best place in the world to build and own an electric vehicle and has already supported the installation of over 100,000 home chargepoints. The UK now has more than 15,500 public chargepoints, more than 1,500 of which are rapid devices – one of the largest networks in Europe. Government's grant schemes and the £400 million public-private Charging Infrastructure Fund will see thousands more electric vehicle chargepoints

installed across the UK. The Road to Zero Strategy includes new commitments to massively expand charging infrastructure across the country. This could include anything from new points popping up on streets to adapting existing lampposts to make the best use of space. This investment will help ensure all regions, including the South West, are prepared for these changes.

Bristol has already been awarded £7m under the Office for Low Emission Vehicle's (OLEV) Go Ultra Low Cities Scheme, which supports cities with ambitious plans to become global exemplars of ultra-low emission vehicle uptake. In February 2019 Bath and North East Somerset Council, Bristol City Council and Cornwall Council were also awarded a share of over £800,000 to install chargepoint infrastructure dedicated to ultra-low emission taxis through the OLEV's £6m Ultra-Low Emission Taxi Infrastructure Competition.



Transformation of the Great Western route

New Intercity Express trains meet the highest rolling stock emissions standards and will reduce both CO₂ emissions and reduce exhaust pollutants, improving local air quality

£81 million has been invested by the government towards sustainable transport measures, including walking and cycling, across the region, in doing so improving access to jobs and education. This includes schemes in central and east Cornwall, Devon, Plymouth, Torbay, Bournemouth, South East Dorset, Swindon and Wiltshire, Bridgwater and Cheltenham and Gloucester.



Case study:
West of England Cycle Transformation

A ten-year transformational strategy supported by £24 million of government funding which connects the Enterprise Areas across the West of England to communities and neighbourhoods with high quality schemes and completes large sections of the cycling and walking network across the Bristol urban area and Bath. Each of the measures are linked by a long term vision to support economic growth, improve productivity and build a strategic network across the West of England.



£400m

public-private Charging Infrastructure Investment Fund



Better, Cleaner Buses

The government is committed to putting the bus at the heart of our plans to reduce emissions and provide cleaner air. In the South West we have provided:

£4.8m

for 110 biomethane buses and associated infrastructure in Bristol

£498k

for 3 battery electric buses to operate in Salisbury

£2.7m

to Bristol to retrofit 116 buses to a minimum Euro VI standard

£378k

to Bristol to retrofit 42 buses to reduce nitrogen oxides emissions

£925k

for 10 double deck hybrid buses in Taunton

£650k

for 8 double deck hybrid buses in Bath

£167k

for 2 electric buses in Poundbury



Investing to create infrastructure fit for the future

To help give the South West the housing it needs to support a prosperous future and give people good quality homes to live in, the government is investing in vital physical infrastructure projects – like the building of roads, bridges, cycling and walking infrastructure, energy networks and other utilities – the absence of which continues to hold housebuilding back.

8,000 new homes in Swindon at New Eastern Villages will be enabled by a £35 million contribution government is providing for the upgrade of White Hart Junction and the provision of a new Southern Connector Road. 4,500 houses will be unlocked at Wichelstowe through a £23 million contribution to provide additional access across the M4. Additional Growth Deal funding has also been provided for essential improvements to the M4 at Junctions 16 & 17.



£35m

to unlock 8,000 new homes at Swindon New Eastern Villages

Near Exeter, 3,500 new homes have been enabled at Cranbrook new community through the now completed East of Exeter Access Improvements scheme – with a £10.4 million government contribution. Better access will also be provided to Exeter Science Park and Skypark business development – which together are expected to create more than 10,000 jobs and generate around £450 million in private sector investment.



£23m

to help enable development of 4,500 new homes at Wichelstowe



£10.4m

contribution has enabled the delivery of 3,500 new homes at Cranbrook new community, near Exeter



In Poole, 2,500 new homes will be unlocked by £23.3 million of Growth Deal funding for a package of schemes around the Port of Poole – one of Dorset’s key assets. The package focuses on four major transport schemes that will improve access into and around the Port of Poole and help unlock regeneration sites to create opportunities for business and to enable the delivery of the new homes. The investment will bring an anticipated £500 million of leveraged private investment into the area.

“This multi-million-pound investment into the Port of Poole’s transport infrastructure will not only safeguard important road and bridge routes but will also unlock economic growth into the region. Improving the Port of Poole’s infrastructure will secure industrial, maritime, residential and visitor growth and deliver significant long-term employment, housing and economic benefits.”

Jim Stewart Chair
Dorset Local Enterprise Partnership



£23.3m

Growth Deal funding to help unlock 2,500 new homes in Poole

Photos appear by the permission of the following write owners:

Cover: Great Western Railway

Pg 5: Great Western Railway

Pg 7: Cornwall Council

Pg 10: Highways England

Pg 11: Highways England

Pg 12: Cornwall Council

Pg 13: Great Western Railway

Pg 15: Cornwall Council

Pg 16: Plymouth City Council

Pg 18: Devon County Council

Pg 19: Somerset County Council

Pg 20: Gloucestershire County Council

Pg 21: Devon County Council

Pg 22: North Somerset Council, West of
England Combined Authority

Pg 23: Great Western Railway

Pg 24: Cornwall Council

Pg 25: Devon County Council

Pg 28: West of England Combined Authority

Pg 29: gfirst LEP

Pg 31: Great Western Railway

Pg 32: Bournemouth Borough Council

Pg 35: Somerset County Council

Pg 36: West of England Combined Authority

Pg 39: Swindon and Wiltshire LEP

Pg 40: Devon County Council

Pg 42: Poole Borough Council